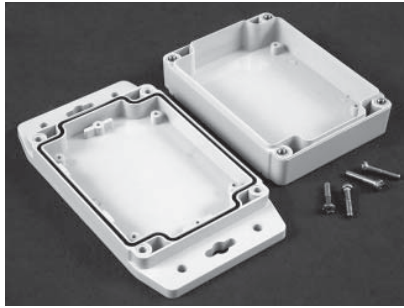


Polycarbonate Enclosure - NEMA 4X 1555F Series



Corrosion Resistant

Junction Boxes

Application

- Designed for harsh industrial environments or outdoor application controls, security or wireless.

Standards

- UL/cUL 508 Type 4, 4X, 12 and 13
- **Complies with**
 - NEMA 4, 4X, 12 and 13
 - IEC 60529 IP66
 - UL94 VO

Construction

- Electronic instrument enclosures, designed for mounting printed circuit boards or DIN rail mounted components.
- The polycarbonate material carries a UL flammability rating of UL94 VO and is suitable for outdoor use.
- Lid and mounting holes are located outside of the gasket seal.
- Lid is secured with self capturing M4 stainless steel machine screws (included), threaded into integral stainless steel bushings (for repetitive assembly & disassembly).
- Heavy duty 16 gauge galvanized steel panels available (see chart)
- All stainless steel hardware to avoid corrosion caused by dissimilar metals.
- Gasket is pre-formed using high temperature U.L. listed - silicone rubber gasket material.
- Gasketed lid with two piece "tongue & groove" construction provides protection against access of oil, dust and water.
- Internal DIN rail mounting tabs molded in all except the 1555C2F22GY & 1555C2F42GY
- Threaded (M3) integral brass inserts & standoffs designed for 1/4" or #6 self tapping screws for P.C. board or inner panel mounting in all but the smallest size.

Finish

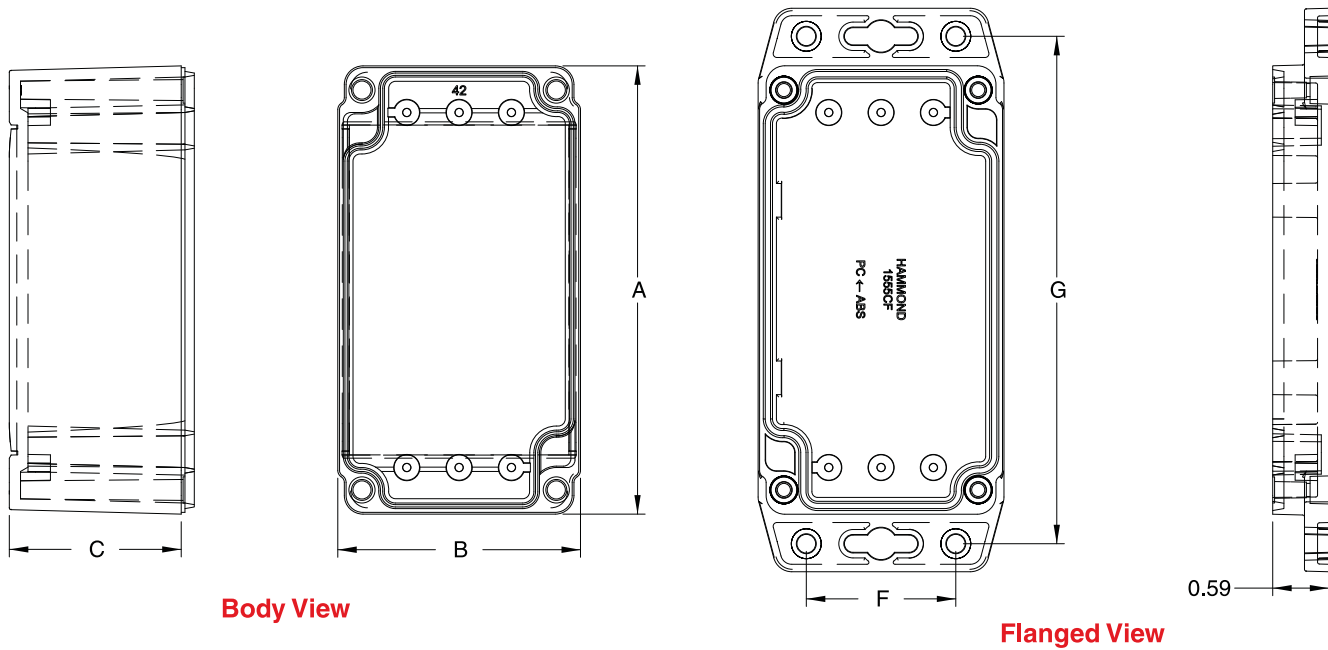
- Color is light gray (RAL 7035)

Optional Inner Panel

- Heavy duty panels for mounting components.
- Galvanized 16 ga. steel.
- Includes mounting hardware.

Polycarbonate Enclosure - NEMA 4X

1555F Series



Corrosion Resistant

Junction Boxes

Solid Cover Part No.	Units	Dimensions					Optional Inner Panel Part No.	Dimensions	
		A	B	C	F	G		Length	Width
1555C2F22GY	inch	4.72	2.59	1.06	1.57	5.35	1555CFPL	4.25	2.07
	mm	120	65	27	40	135		108	52
1555C2F42GY	inch	4.72	2.59	1.85	1.57	5.35	1555CFPL	4.25	2.07
	mm	120	65	47	40	135		108	52
1555F2F17GY	inch	4.72	3.57	0.87	1.99	5.54	1555FFPL	4.25	2.99
	mm	120	91	22	50	140		108	76
1555F2F42GY	inch	4.72	3.57	1.85	1.99	5.54	1555FFPL	4.25	2.99
	mm	120	91	47	50	140		108	76
1555N2F17GY	inch	4.72	4.72	0.87	2.75	5.54	1555NFPL	4.25	4.25
	mm	120	120	22	70	140		108	108
1555N2F42GY	inch	4.72	4.72	1.85	2.75	5.54	1555NFPL	4.25	4.25
	mm	120	120	47	70	140		108	108
1555J2F17GY	inch	6.29	3.57	0.87	1.99	7.12	1555JFPL	5.82	2.99
	mm	160	91	22	50	180		148	76
1555J2F42GY	inch	6.29	3.57	1.85	1.99	7.12	1555JFPL	5.82	2.99
	mm	160	91	47	50	180		148	76
1555H2F17GY	inch	7.12	4.72	0.87	2.75	7.87	1555HFPL	6.61	4.25
	mm	180	120	22	70	200		168	108
1555H2F42GY	inch	7.12	4.72	1.85	2.75	7.87	1555HFPL	6.61	4.25
	mm	180	120	47	70	200		168	108